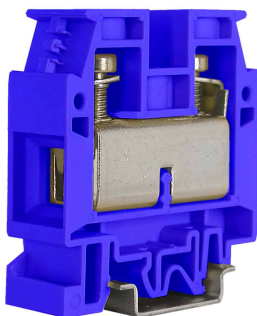
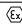
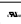




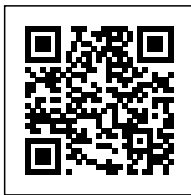


screw terminal block 1 level feed-through, 50 mm², blue



| | |
|---|--|
| Series | CBD |
| Code | CBX72 |
| Type | CBD.50 (Ex)i |
| HS code | 85369010 |
| Colour | blue |
| TECHNICAL FEATURES | |
| Function/Type | Feed-through |
| Rated cross-section | 50 mm ² |
| Connecting capacity | |
| Flexible wire | 1.5-50 mm ² |
| Rigid wire | 1-70 mm ² |
| Wire with ferrule - ferrule type | 50 mm ² – WP500/40 |
| Electrical characteristics according to IEC EN standard | |
| Maximum voltage AC/DC | 1000 V |
| Maximum current (rated cross-section) | 150 A |
| Caliber | B9 |
| Electrical characteristics according to UL Standard | |
| Maximum voltage AC/DC | 600 V |
| Maximum current (rated cross-section) | 130 A |
| Section (min-max) | 16-1 (AWG) |
| Tightening torque value (UL) | 3.75 lb.in |
| Electrical characteristics according to ATEX directive and IEC Ex standard | |
| Maximum voltage AC/DC | 630 / 630 V |
| Maximum current (rated cross-section) | 150 A |
| Operating temperature Min/Max | -40 °C / +110 °C |
| Rated impulse withstand voltage / pollution degree | 12 kV / 3 |
| Insulation stripping length | 22 mm |
| Tightening torque value (nom. / max.) | 2.5 / 5 Nm |
| Width (pitch) | 18 mm |
| Length | 57 mm |
| Height mounted on TH35-7.5/TH35-15/G32 | 62 / 70 / 66 mm |
| Insulation material temperature index (EN 60216-1) | 130 °C |
| Plastic material | Polyamide UL94V-0 |
| ACCESSORIES | |
| End section | |
| Grey | CB50/PT/GR (cod. CB711GR) |
| Blue | CB50/PT (Ex)i (cod. CBX73) |
| Beige | CB50/PT (cod. CB711) |
| Thickness | 1.5 mm |
| Cross-connection | |
| Model A) | POF/07 (cod. POF07) – PFX/07 (cod. PFX07) |
| Model B) | – |
| Rated current carrying capacity IEC/ATEX | 150 A / 150 A |
| Switchable cross-connection | POS/77 (cod. POS77) |
| Multiple cross-connection bar | PMP/07/14 (cod. PMP07) 14 poles |
| Shunting screw and sleeve (Standard / Exe) | CPM/07 (cod. CPM07) – CPX/07 (cod. CPX07) |
| Protection cover | PRP/8 (cod. PRP08) |
| Coloured partition plate | DFU/5/R (cod. DU05R) |
| Cross-connection barrier | DFM/700 (cod. DF700) |
| Test plug socket | SDD/2 (cod. DD002) – PSD/C (cod. PD003) |
| Modular test plug | – |
| End section for modular test plug | – |
| Shielding bar | – |
| Marking | |
| Single marking tag | CNU/8/51 (cod. NU0851S) – CNU/10/61 (cod. NU1061S) |
| Single marking tag for pitch insertion | – |
| Warning plate | TUM/07 on 3 and on 4 TUM07 |
| End bracket | |
| TH35 screw type | BT/3 (cod. BT003) |
| TH35 snap-fit type | BTO (cod. BT007) |
| TH35 and G32 snap-fit type | BTU (cod. BT005) |
| Mounting rail | |
| IEC 60715/TH35 | PR/3/... |
| IEC 60715/G32 | PR/DIN/... |
| APPROVALS AND MARKINGS | |
|       | |



DESCRIZIONE DEL PRODOTTO

screw terminal block 1 level feed-through, 50 mm², blue