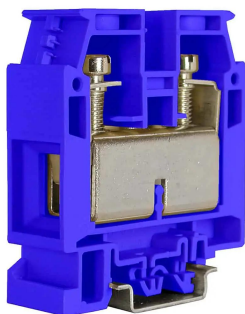

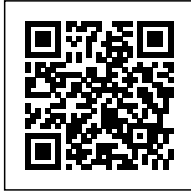


## screw terminal block 1 level feed-through, 70 mm<sup>2</sup>, blue



Series	CBD
Code	CBX82
Type	CBD.70 (Ex)i
HS code	85369010
Colour	blue
<b>TECHNICAL FEATURES</b>	
Function/Type	Feed-through
Rated cross-section	70 mm <sup>2</sup>
<b>Connecting capacity</b>	
Flexible wire	1.5-95 mm <sup>2</sup>
Rigid wire	1-95 mm <sup>2</sup>
Wire with ferrule - ferrule type	-
<b>Electrical characteristics according to IEC EN standard</b>	
Maximum voltage AC/DC	1000 V
Maximum current (rated cross-section)	192 A
Caliber	B11
<b>Electrical characteristics according to UL Standard</b>	
Maximum voltage AC/DC	600 V
Maximum current (rated cross-section)	220 A
Section (min-max)	12-4/0 (AWG)
Tightening torque value (UL)	5.65 lb.in
<b>Electrical characteristics according to ATEX directive and IEC Ex standard</b>	
Maximum voltage AC/DC	630 / 630 V
Maximum current (rated cross-section)	173 A
Operating temperature Min/Max	-40 °C / +110 °C
Rated impulse withstand voltage / pollution degree	12 kV / 3
Insulation stripping length	26 mm
Tightening torque value (nom. / max.)	3 / 8 Nm
Width (pitch)	20.5 mm
Length	62 mm
Height mounted on TH35-7.5/TH35-15/G32	71 / 79 / 75 mm
Insulation material temperature index (EN 60216-1)	130 °C
Plastic material	Polyamide UL94V-0
<b>ACCESSORIES</b>	
<b>End section</b>	
Grey	CB70/PT/GR (cod. CB811GR)
Blue	CB70/PT (Ex)i (cod. CBX83)
Beige	CB70/PT (cod. CB811)
Thickness	1.5 mm
<b>Cross-connection</b>	
Model A)	POF/08 (cod. POF08) – PFX/08 (cod. PFX08)
Model B)	-
Rated current carrying capacity IEC/ATEX	192 A / 155 A
Switchable cross-connection	POS/08 (cod. POS08)
Multiple cross-connection bar	PMP/08/12 (cod. PMP08) 12 poles
Shunting screw and sleeve (Standard / Exe)	CPM/08 (cod. CPM08) – CPX/08 (cod. CPX08)
Protection cover	PRP/8 (cod. PRP08)
Coloured partition plate	DFU/6/R (cod. DU06R)
Cross-connection barrier	DFM/700 (cod. DF700)
Test plug socket	SDD/2 (cod. DD002) – PSD/C (cod. PD003)
Modular test plug	-
End section for modular test plug	-
Shielding bar	-
<b>Marking</b>	
Single marking tag	CNU/8/51 (cod. NU0851S) – CNU/10/61 (cod. NU1061S)
Single marking tag for pitch insertion	-
Warning plate	TUM/08 on 3 and on 4 TUM08
<b>End bracket</b>	
TH35 screw type	BT/3 (cod. BT003)
TH35 snap-fit type	BTO (cod. BT007)
TH35 and G32 snap-fit type	BTU (cod. BT005)
<b>Mounting rail</b>	
IEC 60715/TH35	PR/3/...
IEC 60715/G32	PR/DIN/...
<b>APPROVALS AND MARKINGS</b>	
	



## DESCRIZIONE DEL PRODOTTO

screw terminal block 1 level feed-through, 70 mm<sup>2</sup>, blue