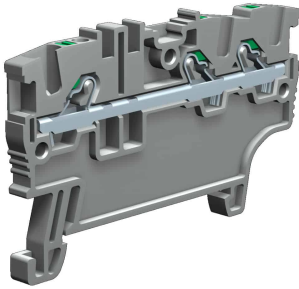
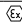
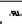
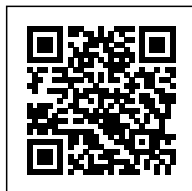


push-in terminal block 1 level feed-through, 1.5mm², grey



| | |
|---|---|
| Series | EFC |
| Code | EFC110GR |
| Type | EFC.1/1+2/GR |
| HS code | 85369010 |
| Colour | Grey |
| TECHNICAL FEATURES | |
| Function/Type | Feed-through |
| Rated cross-section | 1.5 mm ² |
| Connecting capacity | |
| Flexible wire | 0.2-1.5 mm ² |
| Rigid wire | 0.2-1.5 mm ² |
| Wire with ferrule - ferrule type | 1.5 mm ² - WP15/14 |
| Electrical characteristics according to IEC EN standard | |
| Maximum voltage AC/DC | 630 V |
| Maximum current (rated cross-section) | 17.5 A |
| Caliber | A1 - B1 |
| Electrical characteristics according to UL Standard | |
| Maximum voltage AC/DC | 300 V |
| Maximum current (rated cross-section) | 15 A |
| Section (min-max) | 26-14 (AWG) |
| Electrical characteristics according to ATEX directive and IEC Ex standard | |
| Maximum voltage AC/DC | 440 V |
| Maximum current (rated cross-section) | 17 A |
| Operating temperature Min/Max | -40 °C / +110 °C |
| Rated impulse withstand voltage / pollution degree | 6 kV / 3 |
| Insulation stripping length | 8 mm |
| Width (pitch) | 3.5 mm |
| Length | 56.4 mm |
| Height mounted on TH35-7.5/TH35-15/G32 | 36.5 / 44 / - mm |
| Insulation material temperature index (EN 60216-1) | 130 °C |
| Plastic material | Polyamide UL94V-0 |
| ACCESSORIES | |
| End section | |
| Grey | EFC.1/1+2/PT/GR (cod. EFC111GR) |
| Blue | EFC.1/1+2/PT/BL (cod. EFC111BL) |
| Thickness | 1.5 mm |
| Cross-connection | EFB.1/.../... (cod. EFB01...) |
| Rated current carrying capacity IEC/ATEX | 17.5 A / 16 A |
| Coloured partition plate | DFE.1+2/R (cod. DFE02R) |
| Marking | |
| Adhesive numbering strip | TMM102105AW (cod. TMM102105AW) |
| Snap-on numbering strip | TMM102105W (cod. TMM102105W) |
| Single marking tag | CNU/8/35 (cod. NU0835S), CNU/10/35 (cod. NU1035S) |
| Single marking tag for pitch insertion | CNU/8/35 (cod. NU0835S), CNU/10/35 (cod. NU1035S) |
| End bracket | |
| TH35 screw type | BT/3 (cod. BT003) |
| TH35 snap-fit type | BTO (cod. BT007) |
| TH35 and G32 snap-fit type | BTU (cod. BT005) |
| DIN rail according to IEC 60715/TH35 | PR/3/.. |
| APPROVALS AND MARKINGS |   |



* Reduced wiring time* Wire release push button
1 For more details on accessories, refer to the relevant chapters

DESCRIZIONE DEL PRODOTTO

push-in terminal block 1 level feed-through, 1.5mm², grey