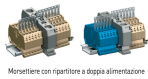
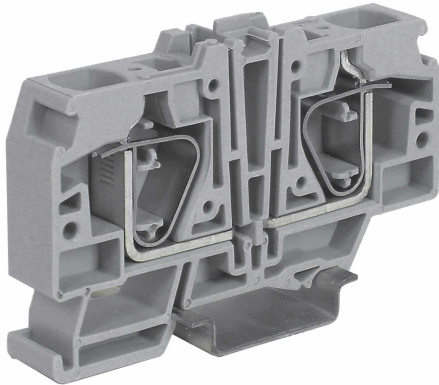
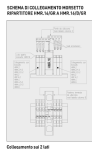


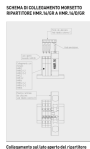
spring clamp terminal block 1 level feed-through, 16 mm², grey



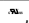




Morsettiere con ripartitore a doppia alimentazione

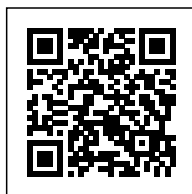


Collegamento al DIN



Collegamento al DIN con split/center

Series	HMR
Code	HM360GR
Type	HMR.16/D/GR
HS code	85369010
Colour	grey
TECHNICAL FEATURES	
Function/Type	Feed-through (distributor)
Rated cross-section	16 mm ²
Connecting capacity	
Flexible wire	1.5-25 mm ²
Rigid wire	1.5-25 mm ²
Wire with ferrule - ferrule type	16 mm ² - WP160/22
Electrical characteristics according to IEC EN standard	
Maximum voltage AC/DC	800 V
Maximum current (rated cross-section)	76 A (1)
Caliber	A7
Electrical characteristics according to UL Standard	
Maximum voltage AC/DC	600 V
Maximum current (rated cross-section)	30 A (1)
Section (min-max)	18-4 (AWG)
Electrical characteristics according to ATEX directive and IEC Ex standard	
Maximum voltage AC/DC	-
Maximum current (rated cross-section)	-
Operating temperature Min/Max	-
Rated impulse withstand voltage / pollution degree	12 kV / 3
Insulation stripping length	18 mm
Width (pitch)	12.8 mm
Length	80 mm
Height mounted on TH35-7.5/TH35-15/G32	50 / 57 / - mm
Insulation material temperature index (EN 60216-1)	130 °C
Plastic material	Polyamide UL94V-0
ACCESSORIES	
End section	
Grey	See tab.
Blue	-
Thickness	Vedi tabella
Cross-connection	
Model A)	See note (2)
Model B)	See note (2)
Rated current carrying capacity IEC/ATEX	See table
Cross-connection identification strip	-
Coloured partition plate	DFH/4/R (cod. DH04R)
Cross-connection barrier	-
Test plug	SDD/1 (cod. DD001)
Modular test plug	-
End section for modular test plug	-
Marking	
Single marking tag	CNU/8/51 (cod. NU0851)
Single marking tag for pitch insertion	-
End bracket	
TH35 screw type	BT/3 (cod. BT003)
TH35 snap-fit type	BTO (cod. BT007)
TH35 and G32 snap-fit type	BTU (cod. BT005)
DIN rail according to IEC 60715/TH35	-
APPROVALS AND MARKINGS	    



* Can be mounted together to: HMM.2/GR, HMM.2/1+2/GR, HMM.2/2+2/ GR, HMS.2/GR, HMFA.2/GR, HMM.4/GR, HMM.4/1+2/GR, HMM.4/2+2/GR, HMM.6/GR
 1 For more details on accessories, refer to the relevant chapters 2 (1) Values refer to the terminal, not the cross-connection bridge 3 (2) The cross-connection must have an additional pole, the first pole will be connected to the distributor and the second will be eliminated from the strip of the PTC bridge. See table and illustrations for more details.

DESCRIZIONE DEL PRODOTTO

spring clamp terminal block 1 level feed-through, 16 mm², grey