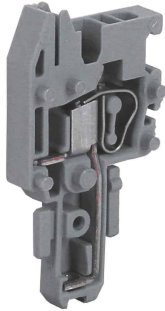
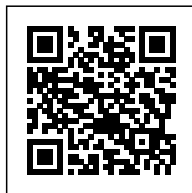


spring clamp terminal block for pluggable connector, 2.5 mm<sup>2</sup>, blue



Series	HVPC-CHP
Code	HVP905
Type	CHP.2 (Ex)i
HS code	85366990, 85389099
Colour	blue
<b>TECHNICAL FEATURES</b>	
Function/Type	Female connector
Rated cross-section	2.5 mm <sup>2</sup>
<b>Connecting capacity</b>	
Flexible wire	0.2-4 mm <sup>2</sup>
Rigid wire	0.2-4 mm <sup>2</sup>
Wire with ferrule - ferrule type	2.5 mm <sup>2</sup> - WP25/14
<b>Electrical characteristics according to IEC EN standard</b>	
Maximum voltage AC/DC	500 V
Maximum current (rated cross-section)	24 A
Caliber	A3
<b>Electrical characteristics according to UL Standard</b>	
Maximum voltage AC/DC	-
Maximum current (rated cross-section)	-
Section (min-max)	-
<b>Electrical characteristics according to ATEX directive and IEC Ex standard</b>	
Maximum voltage AC/DC	-
Maximum current (rated cross-section)	-
Operating temperature Min/Max	-
Rated impulse withstand voltage / pollution degree	8 kV / 3
Insulation stripping length	10 mm
Width (pitch)	5.2 mm
Length	58 mm (1)
Height mounted on TH35-7.5/TH35-15/G32	67 / 75 / - mm (1)
Insulation material temperature index (EN 60216-1)	130 °C
Plastic material	Polyamide UL94V-0
<b>ACCESSORIES</b>	
<b>End section</b>	
Grey	CHP.2/PT/GR (cod. HVP901GR)
Blue	-
Thickness	2.5 mm
<b>Cross-connection</b>	
Model A)	PTC/03/... (cod. PTC03...)
Model B)	PTP/03/... (cod. PTC03...)
Rated current carrying capacity IEC/ATEX	24 A
Cross-connection identification strip	PTC/SP (cod. PTC0990)
Coloured partition plate	DFH/1/R (cod. DH01R)
Cross-connection barrier	-
Test plug	SDD/1 (cod. DD001)
Modular test plug	SDH/5 (cod. DH005)
End section for modular test plug	SH5/PT (cod. DH501)
<b>Marking</b>	
Single marking tag	CNU/8/51 (cod. NU0851S) - CNU/10/51 (cod. NU1051S)
Single marking tag for pitch insertion	CNU/8/51 (cod. NU0851S)
<b>End bracket</b>	
TH35 screw type	-
TH35 snap-fit type	-
TH35 and G32 snap-fit type	-
DIN rail according to IEC 60715/TH35	-
<b>APPROVALS AND MARKINGS</b>	



\* Suitable for pluggable CPH.2 pluggable connectors  
1 For more details on accessories, refer to the relevant chapters2 (1) Dimensions with inserted connector

## DESCRIZIONE DEL PRODOTTO

spring clamp terminal block for pluggable connector, 2.5 mm<sup>2</sup>, blue