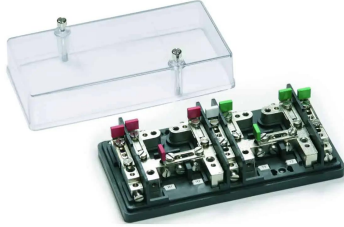
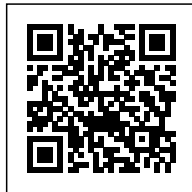
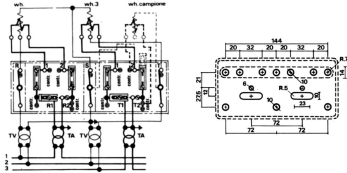


control
terminal board, 6mm², rear entry, red



| | |
|--|----------------------------|
| Series | MCM |
| Code | MC202R |
| Type | MCM.2/R |
| HS code | 85369010 |
| Colour | Red |
| TECHNICAL FEATURES | |
| Function/Type | Sectioning and measurement |
| Rated cross-section | 6 mm ² |
| Rated cross-section | |
| Connecting capacity | |
| Flexible wire | 0.5-6 mm ² |
| Rigid wire | 0.5-6 mm ² |
| Electrical characteristics according to IEC EN standard | |
| Maximum voltage AC/DC | 500 V |
| Maximum current (rated cross-section) | 57 A |
| Protection degree | IP20 |
| Rated impulse withstand voltage / pollution degree | 6 kV / 3 |
| Insulation stripping length | - |
| Tightening torque value (nom. / max.) | 1.2 Nm |
| Dimension | 85x170x48 mm (AxBxH) |
| Plastic material | Kelon UL94V-0 |
| ACCESSORIES | |
| Protection cover | MCM.2/CO (cod. MC002) (1) |
| APPROVALS AND MARKINGS | |



* For meters with ARON insertion* Cable entry from the rear side with 4.1 mm hole* Transparent front cover
1 (1) The cover is already included in the terminal board, this article is to be considered as a spare in case of need

DESCRIZIONE DEL PRODOTTO

control
terminal board, 6mm², rear entry, red