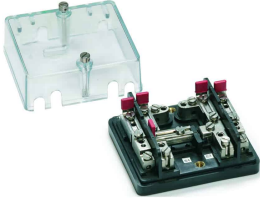
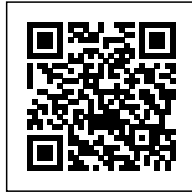
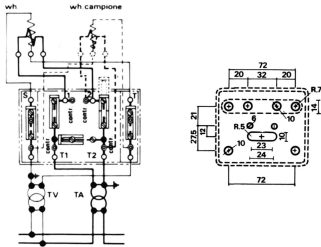


control
terminal board, 6mm², side entry, red



Series	MCT/SA
Code	MC401R
Type	MCT.1/SA/R
HS code	85369010
Colour	Red
TECHNICAL FEATURES	
Function/Type	Sectioning and measurement
Rated cross-section	6 mm ²
Rated cross-section	
Connecting capacity	
Flexible wire	0.5-6 mm ²
Rigid wire	0.5-6 mm ²
Electrical characteristics according to IEC EN standard	
Electrical characteristics according to UL Standard	
Electrical characteristics according to ATEX directive and IEC Ex standard	
Maximum voltage AC/DC	500 V
Maximum current (rated cross-section)	57 A
Protection degree	IP20
Rated impulse withstand voltage / pollution degree	6 kV / 3
Insulation stripping length	-
Tightening torque value (nom. / max.)	1.2 Nm
Dimension	85x95x48 mm (AxBxH)
Plastic material	Kelon UL94V-0
ACCESSORIES	
Protection cover	-
APPROVALS AND MARKINGS	



* For meters with single-phase insertion* Side cable entry with 8 mm wide slot* Transparent front cover

DESCRIZIONE DEL PRODOTTO

control
terminal board, 6mm², side entry, red