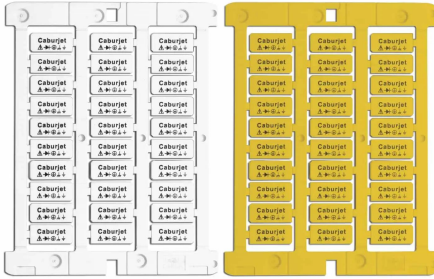
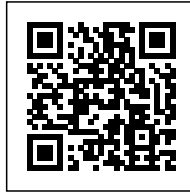


Tag for slotted sleeve and rail 9x20 mm,
White



HS code	39269097
Code	TA209W
Description	tag for slotted sleeve and rail 9x20 mm
Material	PC+ABS
SIZE in mm	
Length	9
Width	20
Print area mm	9x20
Colour	White
Pcs Box	450



* Material: PC/ABS thickness 1,6 mm* Working temperature: -40°/+80°C* Rub resistance: CEI 16-7* Self-extinguishing of material: UL94-V0
1 For standard compliance see page 42 For standard compliance see page 43 For standard compliance see page 44 For standard compliance see page 45 For standard compliance see page 4

DESCRIZIONE DEL PRODOTTO

Appropriate for Siemens and Telemecanique series contactors
 Can be printed with CaburJet
 Material: PC/ABS thickness 1,6 mm, Working temperature: -40°/+80°C, Rub resistance: CEI 16-7, Self-extinguishing of material: UL94-V0, , ,