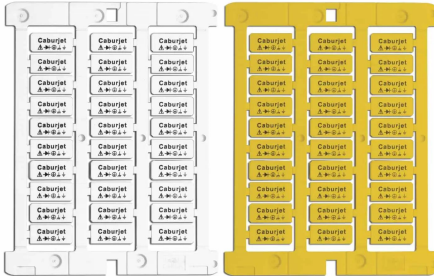
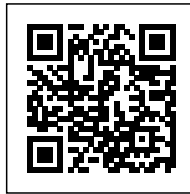


Tag for slotted sleeve and rail 9x20 mm,
Yellow



| | |
|----------------------|---|
| HS code | 39269097 |
| Code | TA209Y |
| Description | tag for slotted sleeve and rail 9x20 mm |
| Material | PC+ABS |
| SIZE in mm | |
| Length | 9 |
| Width | 20 |
| Print area mm | 9x20 |
| Colour | Yellow |
| Pcs Box | 300 |



* Material: PC/ABS thickness 1,6 mm* Working temperature: -40°/+80°C* Rub resistance: CEI 16-7* Self-extinguishing of material: UL94-V0
1 For standard compliance see page 42 For standard compliance see page 43 For standard compliance see page 44 For standard compliance see page 45 For standard compliance see page 4

DESCRIZIONE DEL PRODOTTO

Appropriate for Siemens and Telemecanique series contactors
 Can be printed with CaburJet
 Material: PC/ABS thickness 1,6 mm, Working temperature: -40°/+80°C, Rub resistance: CEI 16-7, Self-extinguishing of material: UL94-V0, , ,