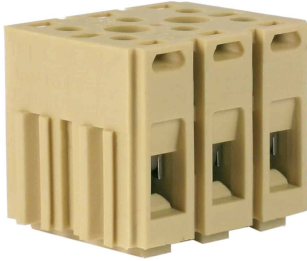


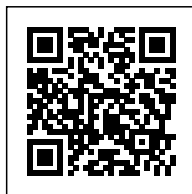
modular multi-pole terminal, 4 mm<sup>2</sup>, beige



Model	Dimensions (mm)	Number of poles
T <td>30x24x26</td> <td>3</td>	30x24x26	3
4 <td>30x24x26</td> <td>4</td>	30x24x26	4
6 <td>30x24x26</td> <td>6</td>	30x24x26	6
8 <td>30x24x26</td> <td>8</td>	30x24x26	8
10 <td>30x24x26</td> <td>10</td>	30x24x26	10
12 <td>30x24x26</td> <td>12</td>	30x24x26	12
14 <td>30x24x26</td> <td>14</td>	30x24x26	14
16 <td>30x24x26</td> <td>16</td>	30x24x26	16
18 <td>30x24x26</td> <td>18</td>	30x24x26	18
20 <td>30x24x26</td> <td>20</td>	30x24x26	20
24 <td>30x24x26</td> <td>24</td>	30x24x26	24
30 <td>30x24x26</td> <td>30</td>	30x24x26	30

Il prodotto è conforme alla direttiva CE 2006/95/CE e alla direttiva CE 2004/108/CE. Il prodotto è conforme alla direttiva CE 2006/95/CE e alla direttiva CE 2004/108/CE. Il prodotto è conforme alla direttiva CE 2006/95/CE e alla direttiva CE 2004/108/CE. Il prodotto è conforme alla direttiva CE 2006/95/CE e alla direttiva CE 2004/108/CE.

<b>Series</b>	BPL-TPL
<b>Code</b>	TP100
<b>Type</b>	TPL.4
<b>HS code</b>	85369010
<b>Colour</b>	Beige
<b>TECHNICAL FEATURES</b>	
<b>Function/Type</b>	Feed-through 3 poles
<b>Rated cross-section</b>	4 mm <sup>2</sup>
<b>Rated cross-section</b>	
<b>Connecting capacity</b>	
<b>Flexible wire</b>	0.5-4 mm <sup>2</sup>
<b>Rigid wire</b>	0.5-6 mm <sup>2</sup>
<b>Wire with ferrule - ferrule type</b>	4 mm <sup>2</sup> - WP40/16
<b>Electrical characteristics according to IEC EN standard</b>	
<b>Maximum voltage AC/DC</b>	500 V
<b>Maximum current (rated cross-section)</b>	32 A
<b>Caliber</b>	A4
<b>Electrical characteristics according to UL Standard</b>	
<b>Maximum voltage AC/DC</b>	300 V
<b>Maximum current (rated cross-section)</b>	20 A
<b>Section (min-max)</b>	18-12 (AWG)
<b>Tightening torque value (UL)</b>	4.4 lb.in
<b>Electrical characteristics according to ATEX directive and IEC Ex standard</b>	
<b>Maximum voltage AC/DC</b>	320 V
<b>Maximum current (rated cross-section)</b>	32 A
<b>Operating temperature Min/Max</b>	-40 °C / +110 °C
<b>Rated impulse withstand voltage / pollution degree</b>	6 kV / 3
<b>Insulation stripping length</b>	9 mm
<b>Tightening torque value (nom. / max.)</b>	0.5 / 0.7 Nm
<b>Dimension</b>	30x24x26 mm (AxBxH)
<b>Insulation material temperature index (EN 60216-1)</b>	130 °C
<b>Plastic material</b>	Polyamide UL94V-0
<b>ACCESSORIES</b>	
<b>End section</b>	-
<b>Insulated bushing</b>	-
<b>APPROVALS AND MARKINGS</b>	Ex, RoHS, REACH



\* Panel mountable with M3 screw (max. 5.6 mm head diameter)\* With dovetail joint for multiple connection  
1 (1) When using BPL.4 and TPL.4 terminal blocks in Ex e classified installations, is required the insulated fixing screw

## DESCRIZIONE DEL PRODOTTO

modular multi-pole terminal, 4 mm<sup>2</sup>, beige