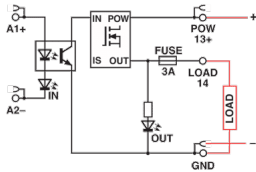
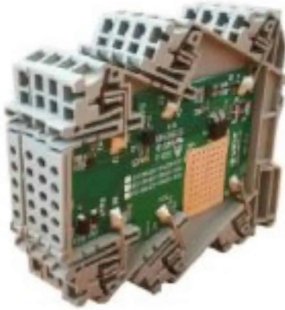
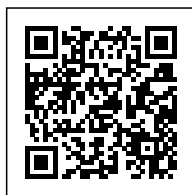


1 solid state relay 5-24Vdc mosfet 3A
spring, fixed



Series	CKS
Code	XCKS024DC024DC03
Type	CKS-024DC/024DC/03
HS code	85364190
INPUT TECHNICAL DATA	
Input rated voltage	5-12-24 Vdc (range 4.7...32 Vdc)
Pull in / drop out voltage type	4.5 V / 4.2 V
Current consumption	10 mA \pm 10% at 24 Vdc
Frequency	200 Hz max.
Protection circuit	Free-wheel diode, Reverse polarity
Connection terminal	2.5 mm ² (spring)
Input channels	1 not pluggable
OUTPUT TECHNICAL DATA	
Contact type	mosfet
Output voltage	5...32 Vdc
Nominal current	3 A (24 Vdc) at 45°C / 5 A (24 Vdc) at 20°C
Continuous current	5 A for 2 s \pm 10% at 25°C (1)
Leakage current with signal 0	< 25 μ A at 24 Vdc
Min applicable load	10 mA / 5 V
Connection type	
Protection circuit device	suppressor diode / resettable fuse (2)
GENERAL TECHNICAL DATA	
Operating temperature range	-20...+60°C
Input / output isolation	2.5 kVac / 60 s
Protection degree	IP 00 / IP20 (3)
Overvoltage category / pollution degree	II / 2
Status indication	LED "Input" / LED "Output-Fail"
Housing material	UL94V-0 plastic material
Dimensions (LxHxD)	6x91x100 mm
Approximate weight	30 g
Mounting information	on a rail, side by side
ACCESSORIES	
Mounting rail (IEC60715/TH35-7.5)	PR/3/AC, PR/3/AC/ZB, PR/3/AS, PR/3/AS/ZB
Marking tag	NU0851
End section	XCKPT
Plugin jumper	PTC/4/02 (2 poles); PTC/4/03 (3 poles); PTC/4/04 (4 poles); PTC/4/05 (5 poles); PTC/4/10 (10 poles); PTC/4/00 (42 poles)
APPROVALS AND MARKINGS	
	CE,



* Not-pluggable relay* Protection against short circuit, overload, overtemperature* Suitable for DC loads* Compact dimension
1 Manufacturer and model of the components is not binding, technical data are to be considered typical2 (1) The maximum current depend on the number of actived output and the ambient temperature3 (2) Protection switch off the output current and yellow LED, The output restart automatically when the overload is removed. The current limiting depending also by operating temperature, for more accuracy or to protect cables with a lower rated current, an external fuse must be provided.4 (3) with the CK/PT end plate on the final module

DESCRIZIONE DEL PRODOTTO

Solid state relay modules single channel, input rated: 5-12-24 Vdc (range 4.7...32 Vdc), input chanals: 1 not pluggable, contact type: mosfet