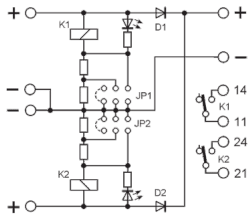
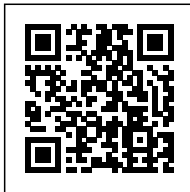


Redundacy module IN: 12-24-48 Vdc 2 x 15 A /OUT: 12-24-48 Vdc



Code	XCSBD
Type	CSBD -
HS code	8504909000
INPUT TECHNICAL DATA	
Input rated voltage	12-24-48 Vdc
Input nominal current	2 x 15 A
OUTPUT TECHNICAL DATA	
Output voltage range	12-24-48 Vdc selectable
Output adjustable range	1 x 15 A (max. 30 A peak)
IN-OUT voltage drop	0.7 V a 15 A
Status indication	LED "DC OK"
Alarm contact	2 dry contacts, max. 1A
GENERAL TECHNICAL DATA	
Operating temperature range	-20...+50°C
Overvoltage category / pollution degree	II / 2
Protection degree	IP 00
Connection terminal	2.5 mm ² / 2.5 mm ²
Housing material	UL94V-0 plastic material
Dimensions (LxHxD)	40x130x85
Approximate weight	120 g
Mounting information	vertical on a rail, 10 mm from adjacent components
ACCESSORIES	
Mounting rail (IEC60715/TH35-7.5)	PR/3/AC, PR/3/AC/ZB, PR/3/AS, PR/3/AS/ZB
Mounting rail (IEC60715/TH35-15)	PR/3/PP, PR/3/PP/ZB, PR/3/PA, PR/3/PA/ZB
APPROVALS AND MARKINGS	CE



* Suitable for connecting power supplies without ORing diodes* 12, 24 and 48 Vdc selectable operating voltages* 2 alarm relays* Compact dimensions

DESCRIZIONE DEL PRODOTTO

Redundacy module IN: 12-24-48 Vdc 2 x 15 A /OUT: 12-24-48 Vdc