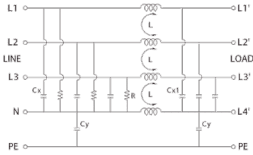
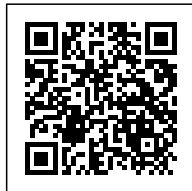


## 3-phase EMI filter with neutral 100A 440Vac



<b>Series</b>	TYT
<b>Code</b>	XF100TYT8
<b>Type</b>	F100TYT8 (1)
<b>HS code</b>	85363030
<b>GENERAL TECHNICAL DATA</b>	
<b>Rated voltage</b>	440 Vac $\pm$ 10%
<b>Continuous current</b>	100 A
<b>Leakage current</b>	1.3 mA
<b>Frequency</b>	50...60 Hz
<b>Operating temperature range</b>	-25...+85°C
<b>Isolation L / L</b>	1.45 kVdc / 60 s (2)
<b>Isolation L / PE</b>	2.25 kVdc / 60 s (2)
<b>Protection degree</b>	IP 20
<b>Connection terminal</b>	fixed screw terminal blocks
<b>Housing material</b>	metallic
<b>Dimensions (LxHxD)</b>	162x252x132 mm
<b>Approximate weight</b>	
<b>Mounting information</b>	screw fixing, on metal panel
<b>Common mode (L/PE) attenuation (dB)</b>	
<b>0.15 MHz</b>	10
<b>0.5 MHz</b>	20
<b>1 MHz</b>	25
<b>5 MHz</b>	30
<b>10 MHz</b>	30
<b>30 MHz</b>	20
<b>Differential mode (L/PE) attenuation (dB)</b>	
<b>0.15 MHz</b>	30
<b>0.5 MHz</b>	40
<b>1 MHz</b>	40
<b>5 MHz</b>	35
<b>10 MHz</b>	35
<b>30 MHz</b>	25
<b>ACCESSORIES</b>	
<b>APPROVALS AND MARKINGS</b>	



\* Models from 36 to 100 A\* Elevated attenuation from 150 kHz to 30 MHz\* Elevated attenuation even on long cables  
1 (1) Produced on demand, contact our sales office for availability2 (2) Isolation test need to be made in DC voltage, according to EN 60950, cause by the internal filter capacitors.

## DESCRIZIONE DEL PRODOTTO

F100TYT8  
3-phase EMI filter with neutral 100A 440Vac