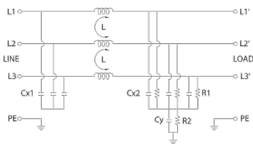
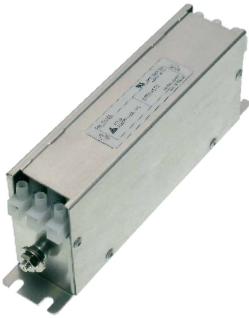



3-phase EMI filter 16A 480Vac



Code	XF16TDVST2
Type	F16TDVST2 -
HS code	85363010
GENERAL TECHNICAL DATA	
Rated voltage	480 Vac \pm 10%
Continuous current	16 A
Leakage current	30 mA
Frequency	50...60 Hz
Operating temperature range	-25...+85°C
Isolation L / L	1.45 kVdc / 60 s (1)
Isolation L / PE	2.25 kVdc / 60 s (1)
Protection degree	IP 20
Connection terminal	fixed screw terminal blocks
Housing material	metallic
Dimensions (LxHxD)	47x252x72 mm
Approximate weight	
Mounting information	screw fixing, on metal panel
Common mode (L/PE) attenuation (dB)	
0.15 MHz	15
0.5 MHz	50
1 MHz	55
5 MHz	60
10 MHz	50
30 MHz	35
Differential mode (L/PE) attenuation (dB)	
0.15 MHz	25
0.5 MHz	55
1 MHz	60
5 MHz	60
10 MHz	55
30 MHz	40
ACCESSORIES	
APPROVALS AND MARKINGS	



* Models from 7 to 130 A* Elevated attenuation from 150 kHz to 30 MHz* Elevated attenuation even on long cables* Compact dimension
1 (1) Isolation test need to be made in DC voltage, according to EN 60950, cause by the internal filter capacitors

DESCRIZIONE DEL PRODOTTO

F16TDVST2 3-phase EMI filter 16A 480Vac