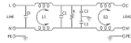



## 2 stages single-phase filter 115–250VAC 30A



<b>Code</b>	XF30DPGS5C
<b>Type</b>	F30DPGS5C
<b>HS code</b>	85363030
<b>GENERAL TECHNICAL DATA</b>	
<b>Rated voltage</b>	115–250 Vac ± 10%
<b>Continuous current</b>	30 A
<b>Leakage current</b>	1 mA (115 Vac) / 2mA (250 Vac)
<b>Frequency</b>	50...60 Hz
<b>Operating temperature range</b>	-25...+100°C
<b>Isolation L / L</b>	1.45 kVdc / 60 s (2)
<b>Isolation L / PE</b>	2.25 kVdc / 60 s (2)
<b>Protection degree</b>	IP 00
<b>Connection terminal</b>	flat plug (from 3 to 20 A) / self-blocking nut (30 A)
<b>Housing material</b>	metallic
<b>Dimensions (LxHxD)</b>	86x120x58 mm
<b>Approximate weight</b>	
<b>Mounting information</b>	screw fixing, on metal panel
<b>Common mode (L/PE) attenuation (dB)</b>	
0.15 MHz	10
0.5 MHz	30
1 MHz	35
5 MHz	55
10 MHz	45
30 MHz	30
<b>Differential mode (L/PE) attenuation (dB)</b>	
0.15 MHz	18
0.5 MHz	45
1 MHz	50
5 MHz	40
10 MHz	40
30 MHz	40
<b>ACCESSORIES</b>	
<b>APPROVALS AND MARKINGS</b> 	



\* Models from 3 to 30 A\* Elevated attenuation from 150 kHz to 30 MHz\* Elevated attenuation even on long cables\* Compact dimension  
1 (1) Produced on demand, contact our sales office for availability2 (2) Isolation test need to be made in DC voltage, according to EN 60950, cause by the internal filter capacitors.

## DESCRIZIONE DEL PRODOTTO

Double-cell single-phase filter IN: 115–250 Vac 30 A