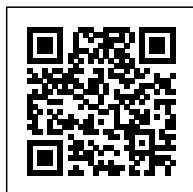
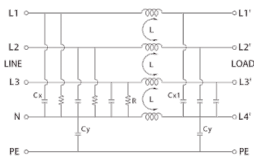




3-phase

EMI filter with neutral 36A 440Vac

Series	TYT
Code	XF36TYT8
Type	F36TYT8 (1)
HS code	85363030
GENERAL TECHNICAL DATA	
Rated voltage	440 Vac \pm 10%
Continuous current	36 A
Leakage current	3 mA
Frequency	50...60 Hz
Operating temperature range	-25...+85°C
Isolation L / L	1.45 kVdc / 60 s (2)
Isolation L / PE	2.25 kVdc / 60 s (2)
Protection degree	IP 20
Connection terminal	fixed screw terminal blocks
Housing material	metallic
Dimensions (LxHxD)	107x191.5x82 mm
Approximate weight	
Mounting information	screw fixing, on metal panel
Common mode (L/PE) attenuation (dB)	
0.15 MHz	25
0.5 MHz	50
1 MHz	50
5 MHz	50
10 MHz	40
30 MHz	25
Differential mode (L/PE) attenuation (dB)	
0.15 MHz	30
0.5 MHz	50
1 MHz	55
5 MHz	50
10 MHz	40
30 MHz	30
ACCESSORIES	
APPROVALS AND MARKINGS	



* Models from 36 to 100 A* Elevated attenuation from 150 kHz to 30 MHz* Elevated attenuation even on long cables
1 (1) Produced on demand, contact our sales office for availability2 (2) Isolation test need to be made in DC voltage, according to EN 60950, cause by the internal filter capacitors.

DESCRIZIONE DEL PRODOTTO

F36TYT8 3-phase EMI filter with neutral 36A 440Vac