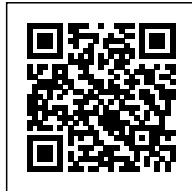
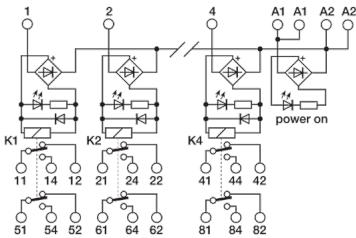


**4 electromechanical relays 24Vac/dc DPDT  
10A screw, pluggable**

<b>Series</b>	
Code	XR042EAD
Type	R42EAD
HS code	85364190
<b>INPUT TECHNICAL DATA</b>	
Input rated voltage	24 Vac/dc $\pm 10\%$
Pull in / drop out voltage type	16.8 V / 2.4 V
Current consumption	22 mA $\pm 10\%$
Turn ON / OFF time	10 ms / 5 ms
Protection circuit	Free-wheel diode, Reverse polarity
Connection terminal	2.5 mm <sup>2</sup> screw
Input channels	4 pluggable
<b>OUTPUT TECHNICAL DATA</b>	
Contact type	DPDT, 2 form C, AgSnO <sub>2</sub>
Nominal current	10 A (250 Vac)
Continuous current	10 A
Connection type	
<b>GENERAL TECHNICAL DATA</b>	
Operating temperature range	-20...+70°C
Input / output isolation	2.5 kVac / 60 s
Protection degree	IP 00
Overvoltage category / pollution degree	II / 2
Status indication	LED "DC OK" / LED "Relay"
Housing material	UL94V-0 plastic material
Dimensions (LxHxD)	70x93x75 mm
Approximate weight	227 g
Mounting information	on a rail, side by side
<b>ACCESSORIES</b>	
Mounting rail (IEC60715/TH35-7.5)	PR/3/AC, PR/3/AC/ZB, PR/3/AS, PR/3/AS/ZB
Mounting rail (IEC60715/TH35-15)	PR/3/PP, PR/3/PP/ZB, PR/3/PA, PR/3/PA/ZB
Spare part relay	8904074
APPROVALS AND MARKINGS	CE



\* Pluggable relay\* AC/DC input voltage\* DPDT contact\* Allow PNP and NPN command  
1 Manufacturer and model of the relay is not binding, technical data are to be considered typical

## DESCRIZIONE DEL PRODOTTO

Electromechanical relay modules multi-channel, input rated: 24 Vac/dc, input channels: 4 pluggable, contact type: DPDT