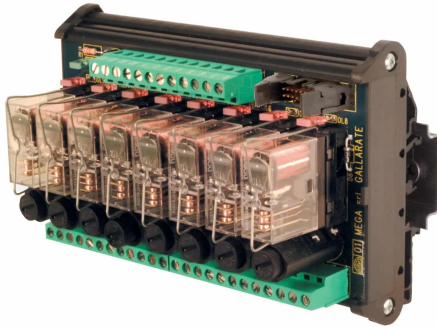
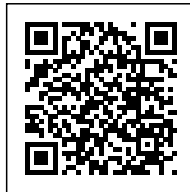
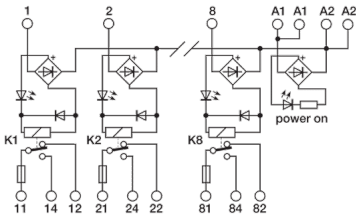


8 electromechanical relays 24Vac/dc SPDT  
16A screw, pluggable



<b>Series</b>	
<b>Code</b>	XR081U24F
<b>Type</b>	R81U24F
<b>HS code</b>	85364190
<b>INPUT TECHNICAL DATA</b>	
<b>Input rated voltage</b>	24 Vac/dc $\pm 10\%$
<b>Pull in / drop out voltage type</b>	16.8 V / 2.4 V
<b>Current consumption</b>	22 mA $\pm 10\%$
<b>Turn ON / OFF time</b>	10 ms / 5 ms
<b>Protection circuit</b>	Free-wheel diode, Reverse polarity
<b>Connection terminal</b>	2.5 mm <sup>2</sup> screw type and 16 poles connector
<b>Input channels</b>	8 pluggable
<b>OUTPUT TECHNICAL DATA</b>	
<b>Contact type</b>	SPDT, 1 form C, AgSnO <sub>2</sub>
<b>Nominal current</b>	16 A (250 Vac)
<b>Continuous current</b>	16 A
<b>Max fuse current</b>	6.3 A (250 Vac) (2)
<b>Connection type</b>	
<b>GENERAL TECHNICAL DATA</b>	
<b>Operating temperature range</b>	-20...+70°C
<b>Input / output isolation</b>	2.5 kVac / 60 s
<b>Protection degree</b>	IP 00
<b>Overvoltage category / pollution degree</b>	II / 2
<b>Status indication</b>	LED "DC OK" / LED "Relay"
<b>Housing material</b>	UL94V-0 plastic material
<b>Dimensions (LxHxD)</b>	137x93x75 mm
<b>Approximate weight</b>	326 g
<b>Mounting information</b>	on a rail, side by side
<b>ACCESSORIES</b>	
<b>Mounting rail (IEC60715/TH35-7.5)</b>	PR/3/AC, PR/3/AC/ZB, PR/3/AS, PR/3/AS/ZB
<b>Mounting rail (IEC60715/TH35-15)</b>	PR/3/PP, PR/3/PP/ZB, PR/3/PA, PR/3/PA/ZB
<b>Spare part relay</b>	8904073
<b>APPROVALS AND MARKINGS</b>	CE,



\* Pluggable relay\* AC/DC input voltage\* SPDT contact\* Allow PNP and NPN command\* Contact protected by replaceable fuse  
1 Manufacturer and model of the relay is not binding, technical data are to be considered typical2 (2) Fuses are not provided, they must be selected according to the load current. The max. value of 6.3 A is referred to the fuses holder capability according to EN 60127.

## DESCRIZIONE DEL PRODOTTO

Electromechanical relay modules multi-channel with fuses, input rated: 24 Vac/dc, input channels: 8 pluggable, contact type: SPDT